
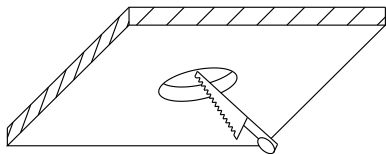


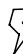
**Step1**

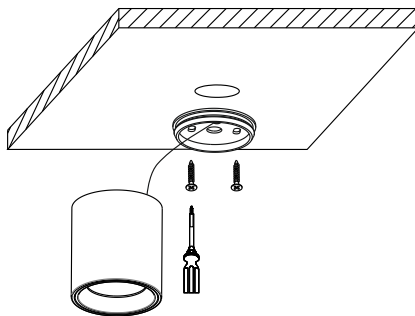
 Please make sure that mains is disconnected before proceeding!



Drill a hole on the ceiling for the wire.


**Step2**

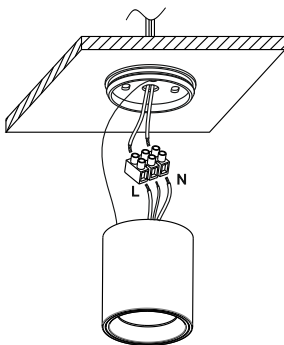
 Please make sure that mains is disconnected before proceeding!



Fix the rear panel on the ceiling.


**Step3**

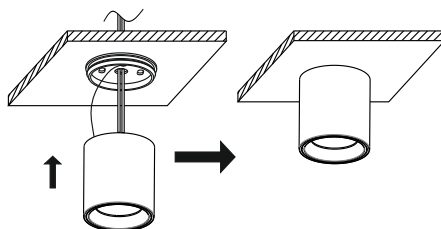
 Please make sure that mains is disconnected before proceeding!



Please connect the wire to (L&N) input terminal of light

**Step4**

 Please make sure that mains is disconnected before proceeding!



Fix the light in the board, then to test.



ON  
OFF